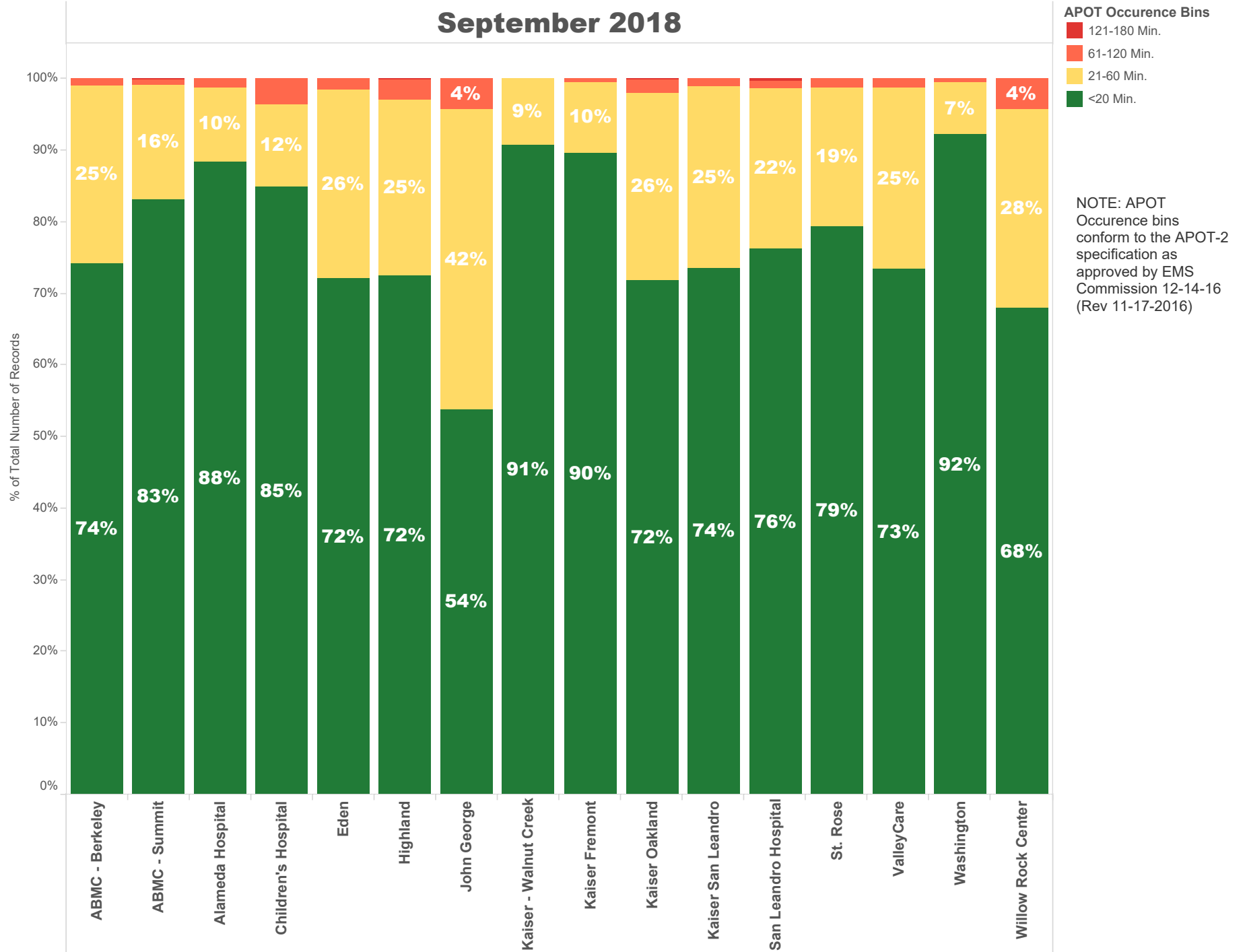


# September 2018

NOTE: The **90th percentile** is the value for which 90% of the data points are smaller.

<b>Destination Facility</b>	Rank (Composite)	Avg. TOC	90th Percentile TOC	APOD >60 min	APOD % of N	N = Number of Transports
Kaiser - Walnut Creek	1	11 min.	19.0 min.	0	0%	175
ABMC - Berkeley	7	17 min.	36.0 min.	6	1%	545
John George	14	23 min.	47.0 min.	20	5%	444
Alameda Hospital	5	11 min.	22.0 min.	2	1%	156
Children's Hospital	12	15 min.	36.4 min.	5	4%	139
San Leandro Hospital	8	16 min.	31.0 min.	9	2%	555
Washington	2	12 min.	19.0 min.	3	0%	767
Kaiser Fremont	3	12 min.	21.0 min.	2	0%	418
ABMC - Summit	4	14 min.	27.0 min.	9	1%	1,061
ValleyCare	9	16 min.	34.0 min.	7	1%	516
Kaiser Oakland	10	17 min.	34.0 min.	12	2%	580
Kaiser San Leandro	6	17 min.	32.0 min.	9	1%	707
Eden	10	17 min.	35.0 min.	17	2%	941
Highland	11	18 min.	35.0 min.	37	3%	1,256
St. Rose	5	15 min.	29.0 min.	5	1%	396
Willow Rock Center	13	22 min.	40.0 min.	2	4%	47

# September 2018



# September 2018

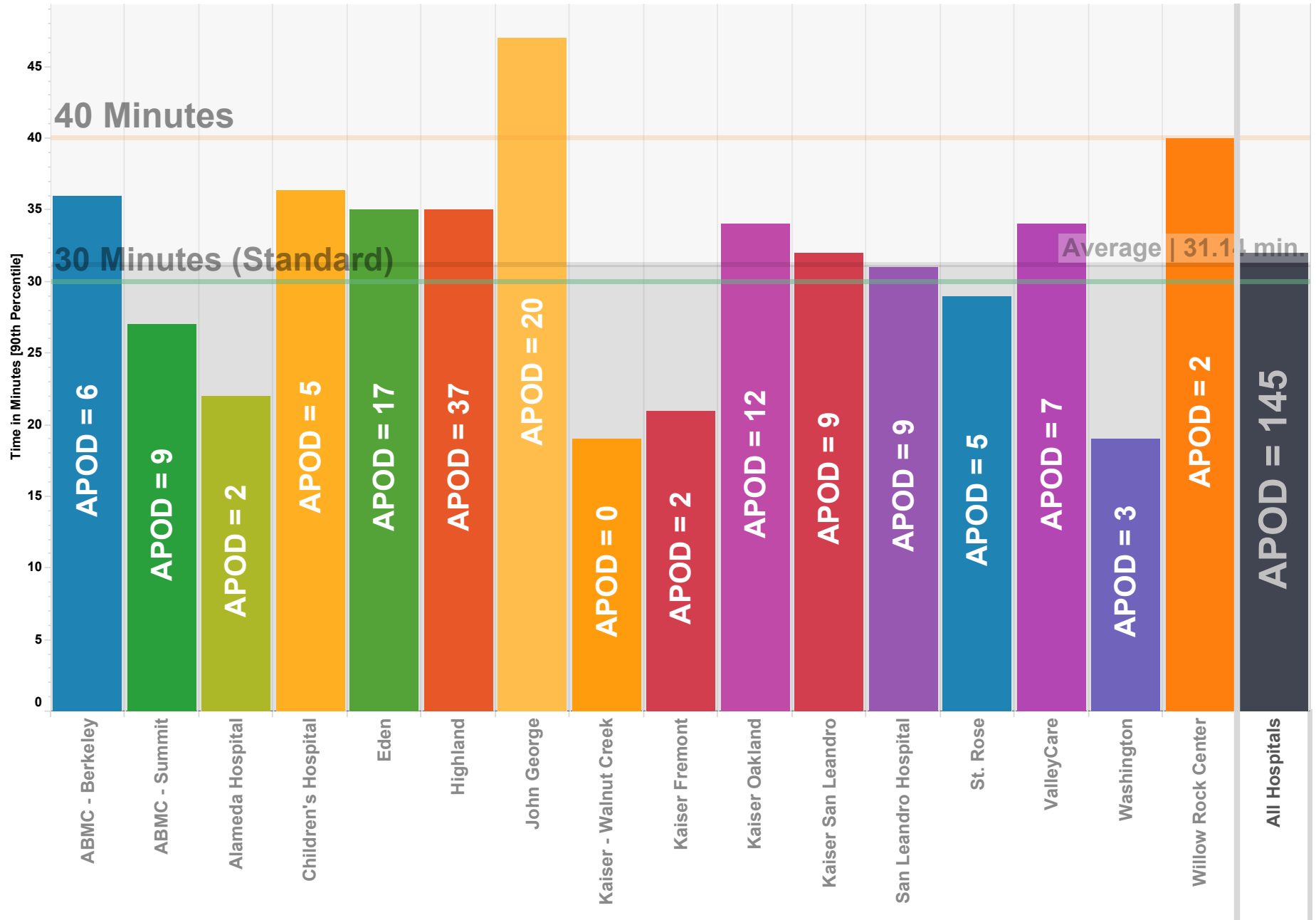
	ABMC - Berkeley	ABMC - Summit	Alameda Hospital	Children's Hospital	Eden	Highland	John George	Kaiser - Walnut Creek	Kaiser Fremont	Kaiser Oakland	Kaiser San Leandro	San Leandro Hospital	St. Rose	ValleyCare	Washington	Willow Rock Center
<b>APOT Occurrence Bins</b>																
<b>&lt;20 Min.</b>	74.3% 405	83.2% 883	88.5% 138	84.9% 118	72.2% 679	72.5% 910	53.8% 239	90.9% 159	89.7% 375	71.9% 417	73.6% 520	76.4% 424	79.3% 314	73.4% 379	92.2% 707	68.1% 32
<b>21-60 Min.</b>	24.8% 135	15.9% 169	10.3% 16	11.5% 16	26.2% 247	24.6% 309	41.9% 186	9.1% 16	9.8% 41	26.0% 151	25.3% 179	22.2% 123	19.4% 77	25.4% 131	7.4% 57	27.7% 13
<b>61-120 Min.</b>	0.9% 5	0.8% 8	1.3% 2	3.6% 5	1.6% 15	2.9% 36	4.3% 19		0.5% 2	1.9% 11	1.1% 8	1.3% 7	1.3% 5	1.2% 6	0.4% 3	4.3% 2
<b>121-180 Min.</b>		0.1% 1				0.1% 1				0.2% 1		0.2% 1				

NOTE: APOT Occurrence bins conform to the APOT-2 specification as approved by EMS Commission 12-14-16 (Rev 11-17-2016)

# Ambulance Patient Offload Times (APOT) September 2018

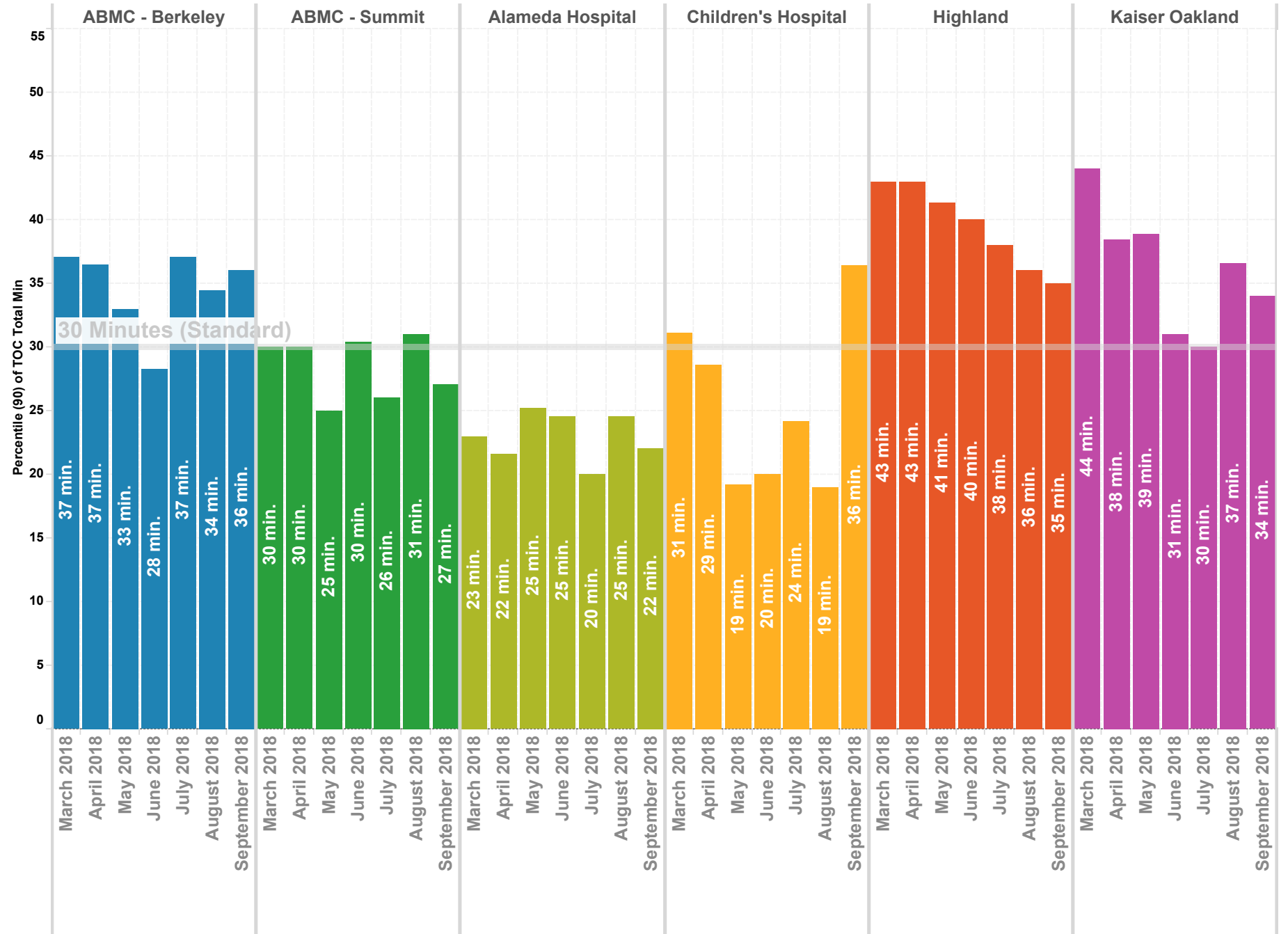
90th Percentile

NOTE: The **90th percentile** is the value for which 90% of the data points are smaller.



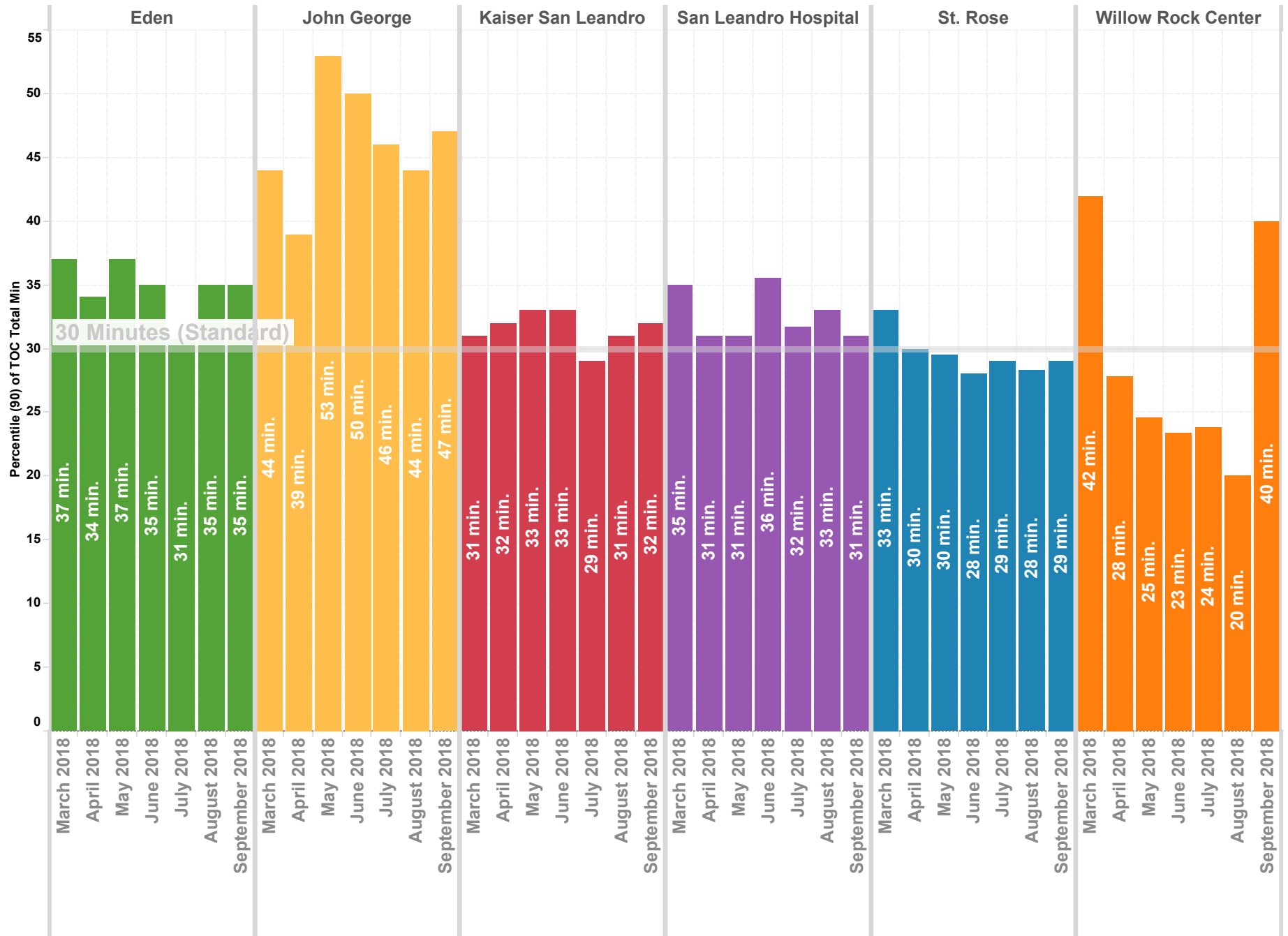
# Wall Times (TOC) 2016 By Month - North County

Previous 8 Months | 90th Percentile



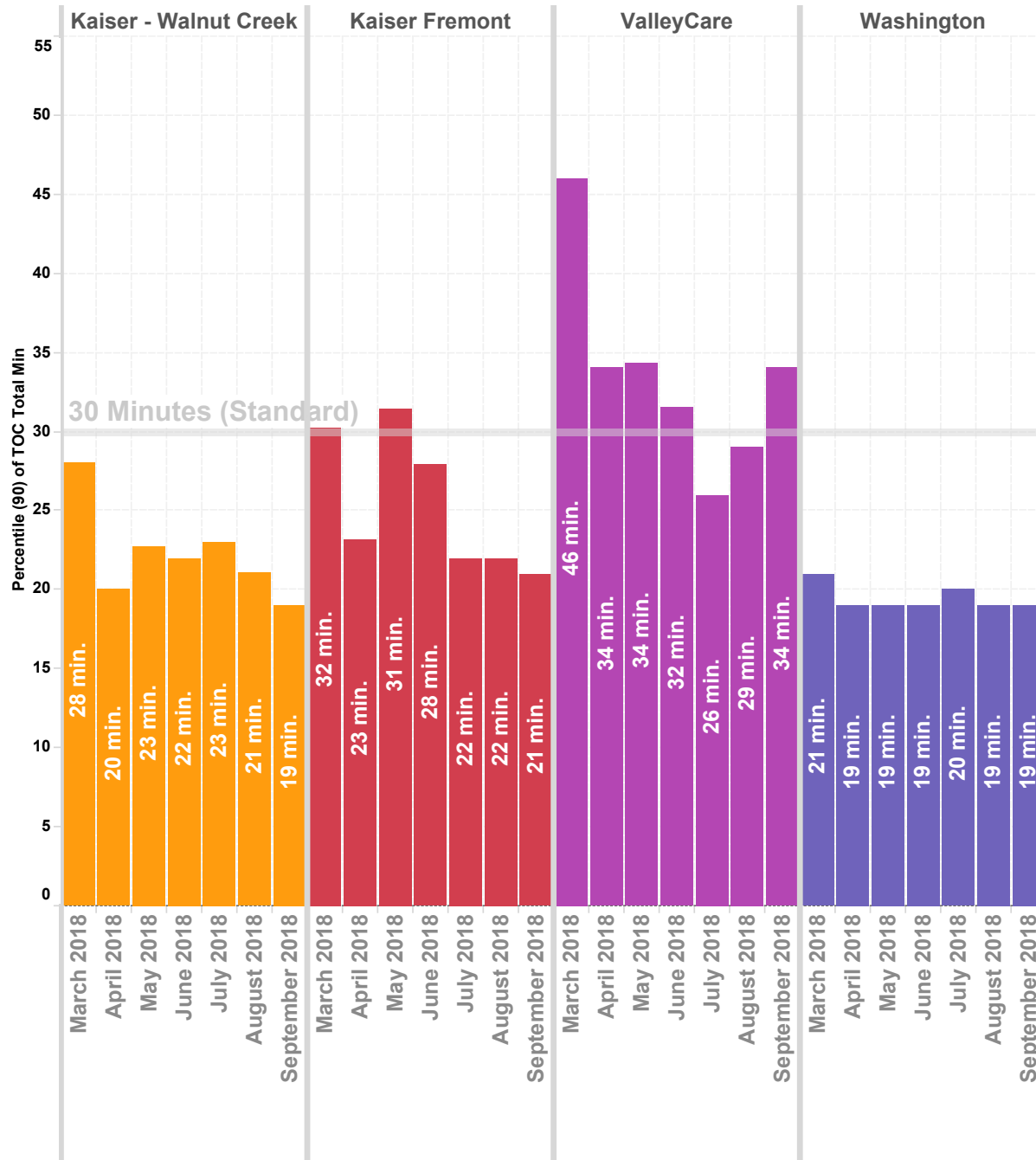
# Wall Times (TOC) 2016 By Month - Mid County

Previous 8 Months | 90th Percentile



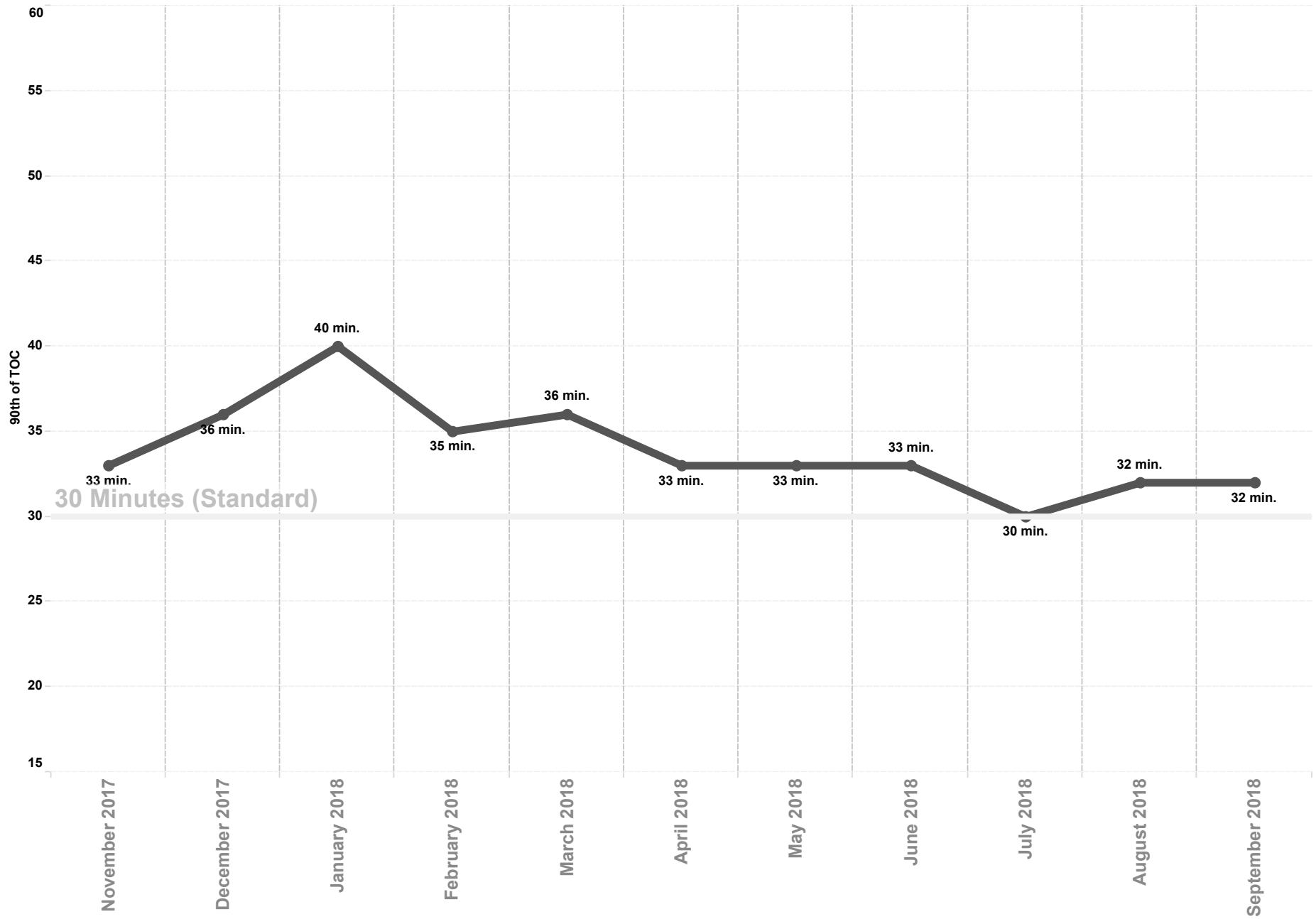
# Wall Times (TOC) 2016 By Month - East County & South County

Previous 8 Months | 90th Percentile



# APOT All Hospitals

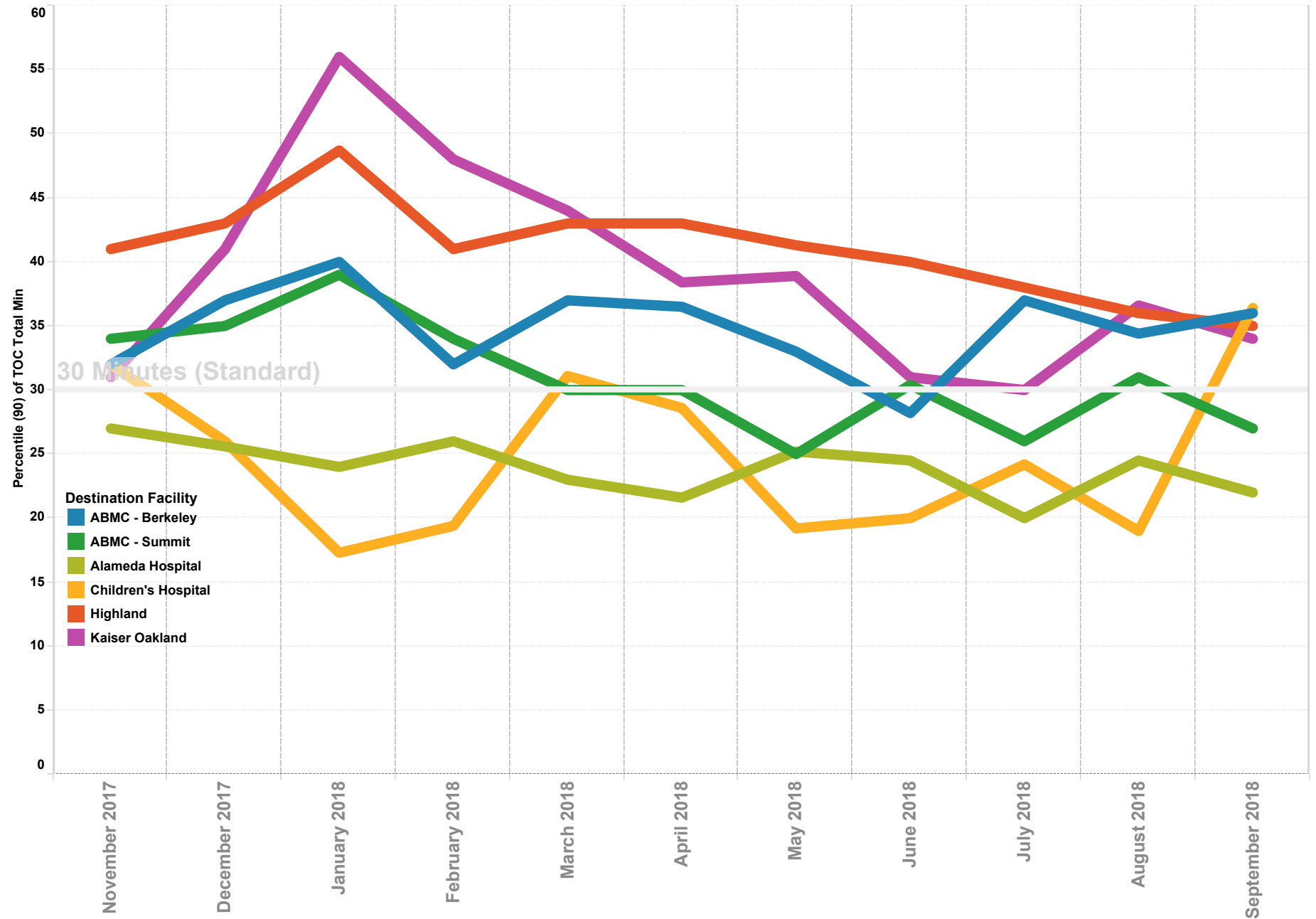
Previous 12 Months | 90th Percentile





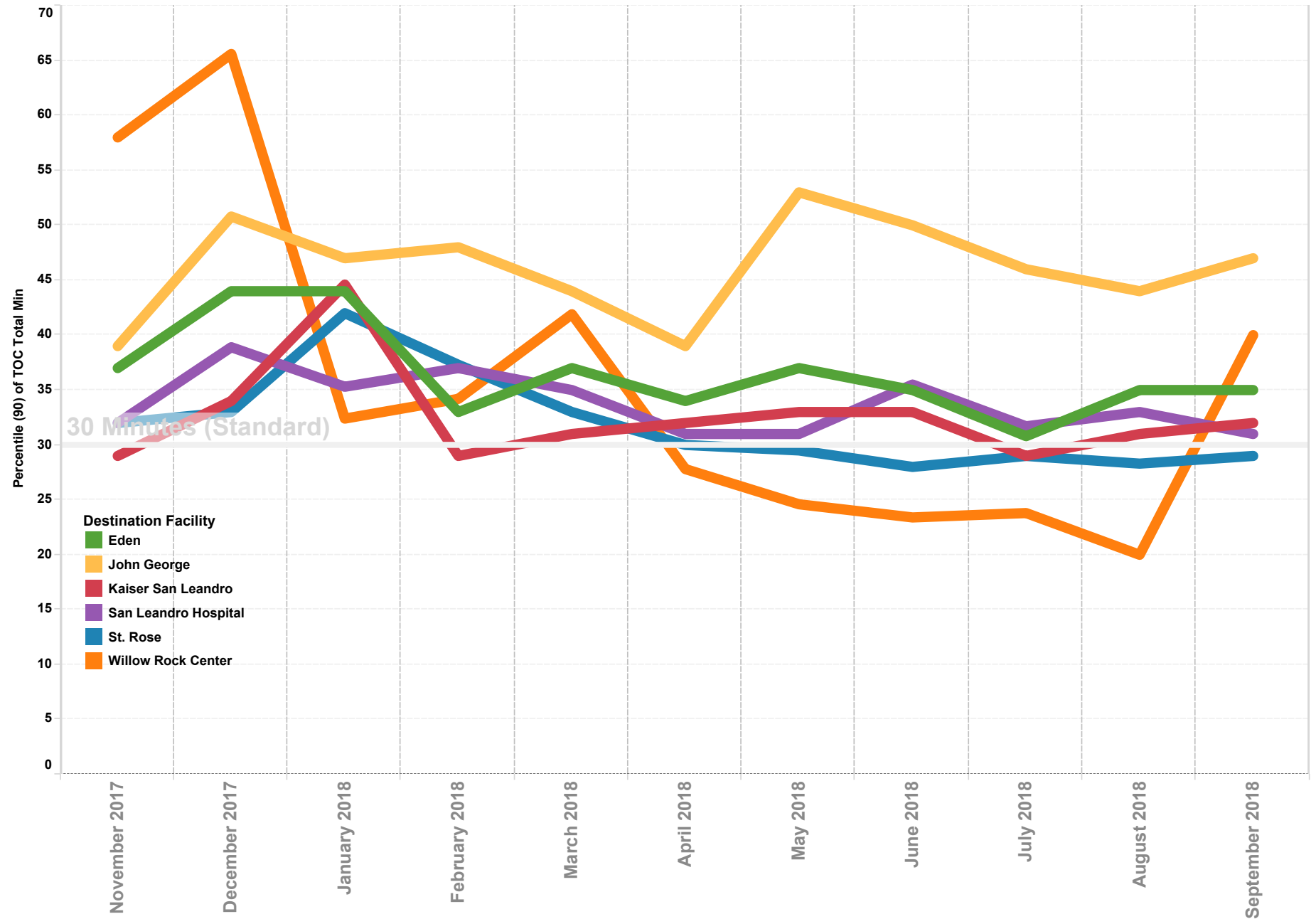
# APOT North County

Previous 12 Months | 90th Percentile



# APOT Mid County

Previous 12 Months | 90th Percentile



# APOT South and East County

Previous 12 Months | 90th Percentile

